

|                                |                    |        |
|--------------------------------|--------------------|--------|
| Client :                       | Project / Projet : |        |
| Order # / Numéro de commande : | Qty/Qté :          | Date : |

### HOW TO ORDER / COMMENT COMMANDER

Example of use / Exemple d'utilisation: 9400 / 48 - OPT - 4000 - Sign18 - ALU - 19.2 - 350mA

| Profile / Profilé | Length / Longueur | Lens / Lentille | Colour / Couleur | Mount / Support | Finishing / Fini | Power / Puissance | Current / Courant |
|-------------------|-------------------|-----------------|------------------|-----------------|------------------|-------------------|-------------------|
| 9400              | /                 | OPT             | -                | -               | -                | 19.2              | 350mA             |

**Length / Longueur**  
36 in. / po.  
48 in. / po.  
60 in. / po.  
Other (in) / Autre (po.)

**Colour / Couleur**  
3000K - WW  
4000K - NW

**Mount / Support**  
Sign06 - 6"/po.  
Sign18 - 18"/po.

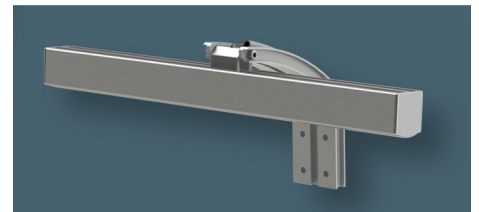
**Finishing / Fini**  
BK - Black / Noir  
ALU - Aluminium

### CERTIFICATIONS



### FEATURES / CARACTÉRISTIQUES

- Made in / Fabriqué au Canada
- ALCOA 6063T-5 Aluminium
- Guideline for easy installation / Guide pour installation facile
- Dimmable lighting / Éclairage graduable. Use/utiliser Lutron CTCL-153P-Skylark or/ou Diva



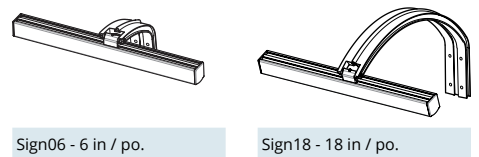
### QUICK ORDER / COMMANDE RAPIDE

| Manuf. Code | XXX Series / Série XXX       | Order / Commander | Qty / Qté |
|-------------|------------------------------|-------------------|-----------|
| XXXXXX      | XXXXXXXXXXXXXXXXXXXXXXXXXXXX |                   |           |
| XXXXXX      | XXXXXXXXXXXXXXXXXXXXXXXXXXXX |                   |           |
| XXXXXX      | XXXXXXXXXXXXXXXXXXXXXXXXXXXX |                   |           |
| XXXXXX      | XXXXXXXXXXXXXXXXXXXXXXXXXXXX |                   |           |
| XXXXXX      | XXXXXXXXXXXXXXXXXXXXXXXXXXXX |                   |           |
| XXXXXX      | XXXXXXXXXXXXXXXXXXXXXXXXXXXX |                   |           |
| XXXXXX      | XXXXXXXXXXXXXXXXXXXXXXXXXXXX |                   |           |
| XXXXXX      | XXXXXXXXXXXXXXXXXXXXXXXXXXXX |                   |           |
| XXXXXX      | XXXXXXXXXXXXXXXXXXXXXXXXXXXX |                   |           |
| XXXXXX      | XXXXXXXXXXXXXXXXXXXXXXXXXXXX |                   |           |
| XXXXXX      | XXXXXXXXXXXXXXXXXXXXXXXXXXXX |                   |           |
| XXXXXX      | XXXXXXXXXXXXXXXXXXXXXXXXXXXX |                   |           |
| XXXXXX      | XXXXXXXXXXXXXXXXXXXXXXXXXXXX |                   |           |
| XXXXXX      | XXXXXXXXXXXXXXXXXXXXXXXXXXXX |                   |           |
| XXXXXX      | XXXXXXXXXXXXXXXXXXXXXXXXXXXX |                   |           |

### FINISHING / FINITION



### MOUNT / SUPPORT



| Length / Longueur           | ≤ 36 in / po. | 37 - 70 in / po. | 5 - 10 ft / pi. | 10 - 16 ft / pi. | 16 - 20 ft / pi. |
|-----------------------------|---------------|------------------|-----------------|------------------|------------------|
| # of Brackets / No. de bras | 1             | 2                | 3               | 4                | 5                |